

SKF[®] roller screws



The SKF Group

The SKF Group is an international industrial corporation of AB SKF Sweden, founded in 1907, operating in 130 countries. The company has some 45000 employees and more than 80 manufacturing facilities throughout the world.

Its international network is supported by nearly 20000 distributors and retailers. SKF is world leader in the rolling bearing business.

Bearing, seals and special steels are SKF's main product areas. In addition, they also manufacture and sell other industrial precision components and products.

SKF Linear Motion

One of these industrial precision products assortment is manufactured and sold by the SKF Linear Motion Division.

This unit has some 700 employees and 3 product lines. One of the division's strengths is its ability to serve the market through its organization based on 10 specialized Sales Companies located in Europe and North America ; however product availability and product application support is provided world-wide by the SKF international network.

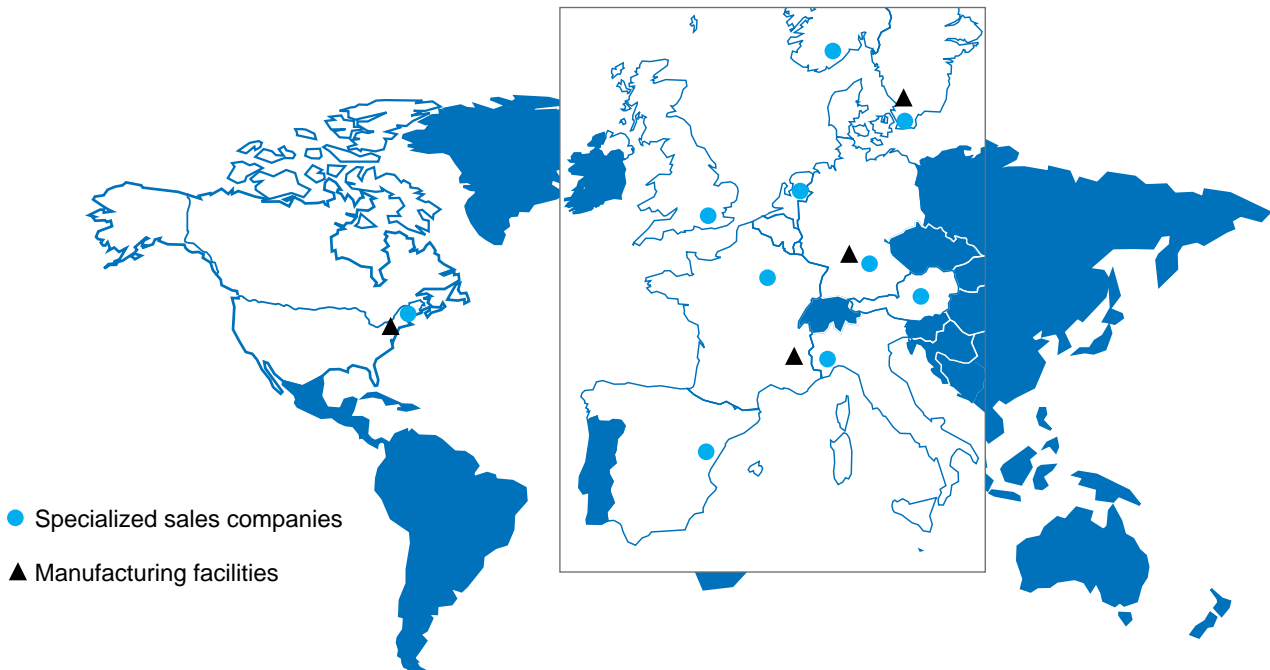
The Linear Motion product range covers :

- high efficiency screws
- linear guiding systems
- electromechanical actuators.

CD-Rom "Designer"

All Linear Motion products are available in this CD, in DWG and DXF files.

Thanks to "Designer", you can easily copy the drawing of the product you need into your own design drawing. If you are interested, please do not hesitate to contact your local SKF sales organization. It is free of charge.



Catalogue n° 4351/6E
January 2001

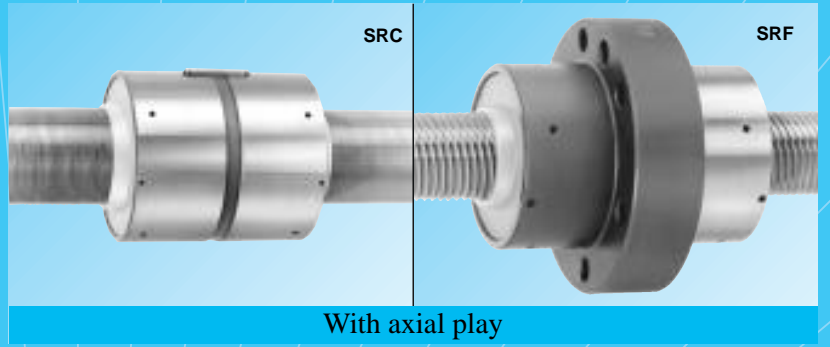
Printed in France

(C) Copyright SKF 1999
The contents of this leaflet are the copyright of the publishers and may not be reproduced (even extracts) unless permission is granted. Every care has been taken to ensure the accuracy of the information contained in this catalogue but no liability can be accepted for any errors or omissions.

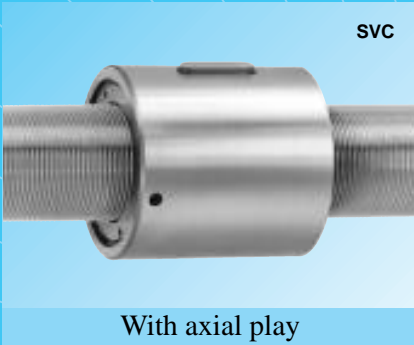
Earlier catalogues the data in which deviate from those given here, are rendered invalid.

The right is reserved to make changes necessitated by technological developments.

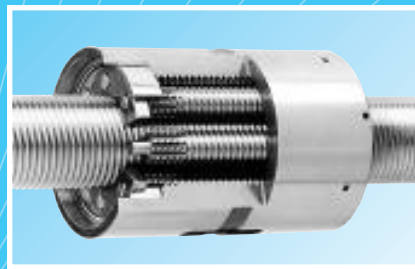
Comparing roller screws to ball screws	6
The principle of planetary roller screws	8
The principle of recirculating roller screws	9
Design hints	10
“Service” range	17
Standard range	23
Special nuts & Actuators	54
SKF worldwide	57
Calculation formulas	58
Symbols	60
Ordering code	61



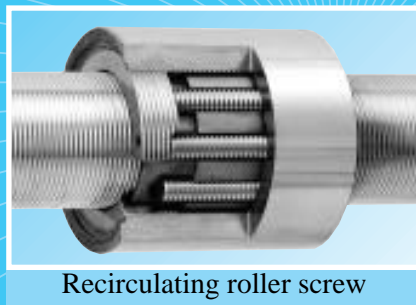
With axial play



With axial play



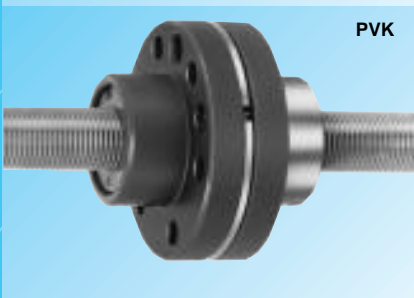
Planetary roller screw



Recirculating roller screw



PVU

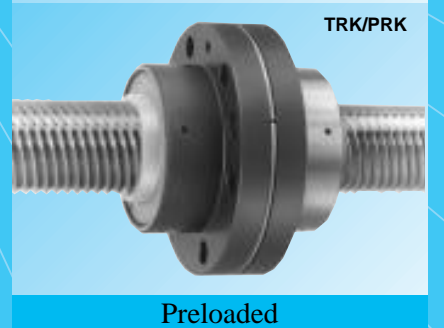


PVK

Preloaded



TRU/PRU



TRK/PRK

Preloaded

Service range

Page

Quick delivery of custom-built assemblies :

Presentation of the SKF "Service" range	17
Planetary roller screw, BRC	19
Recirculating roller screw, BVC	20
Flanged thrust bearing, FLRBU	21

Standard range

Presentation of the SKF "Standard" range	23
--	----

Planetary roller screws : technical data and dimensions

Cylindrical nuts with axial play, SRC	26
Flanged nuts with axial play, SRF	30
Preloaded cylindrical nuts, TRU/PRU	34
Preloaded flanged nuts, TRK/PRK	38
Flanged thrust bearing unit, FLRBU	42

Recirculating roller screws : technical data and dimensions

Cylindrical nuts with axial play, SVC	46
Preloaded cylindrical nuts, PVU	48
Preloaded flanged nuts, PVK	50
Flanged thrust bearing unit, FLRBU	52